

Nútímalegur rekstur í gagnaverum

Lærdómar og reynsla

Tryggvi Farestveit
Forstöðumaður hýsingarlausna

Forsagan

- Verklag
- Skjölun
- Skipulag
- Yfirsýn





Gagnaver

OPIN KERFI

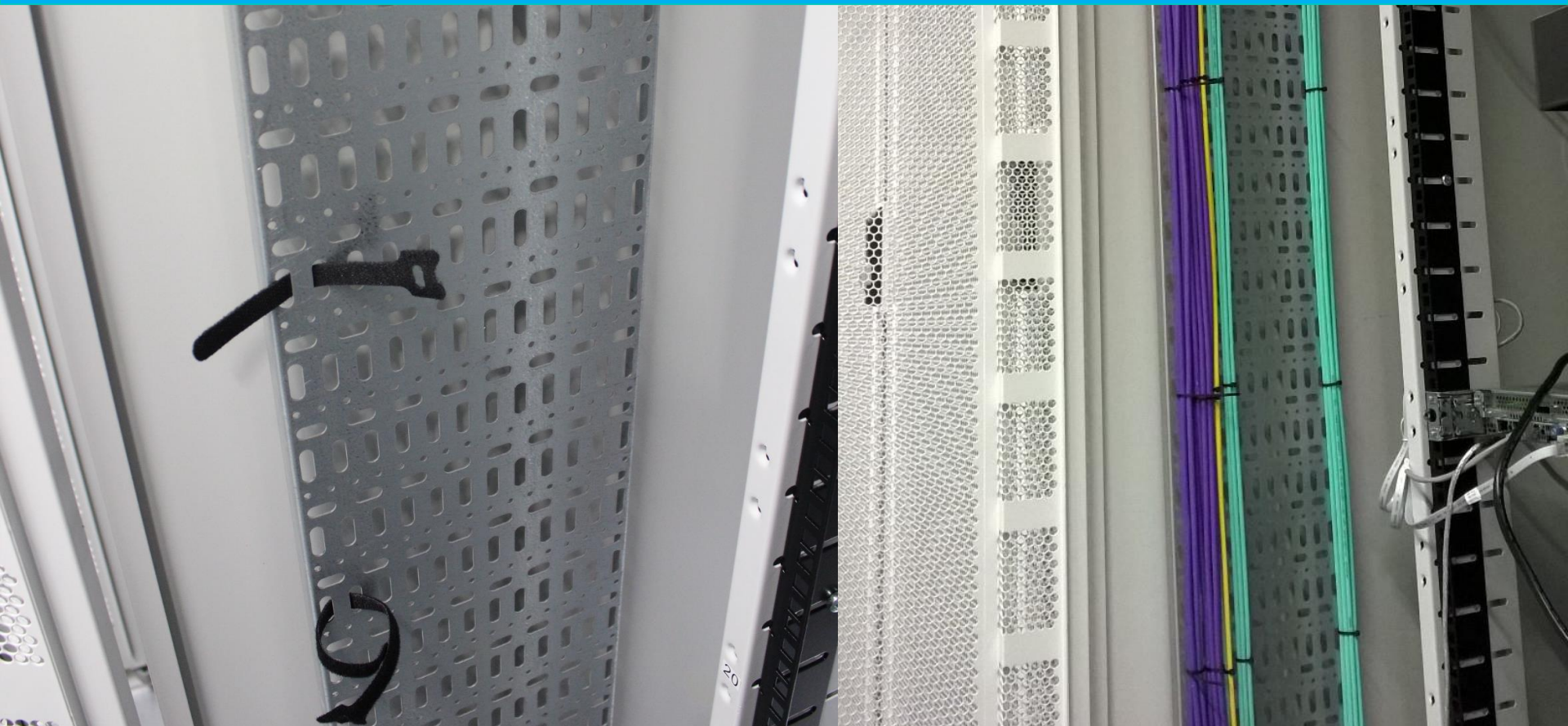


Skápar og búnaður

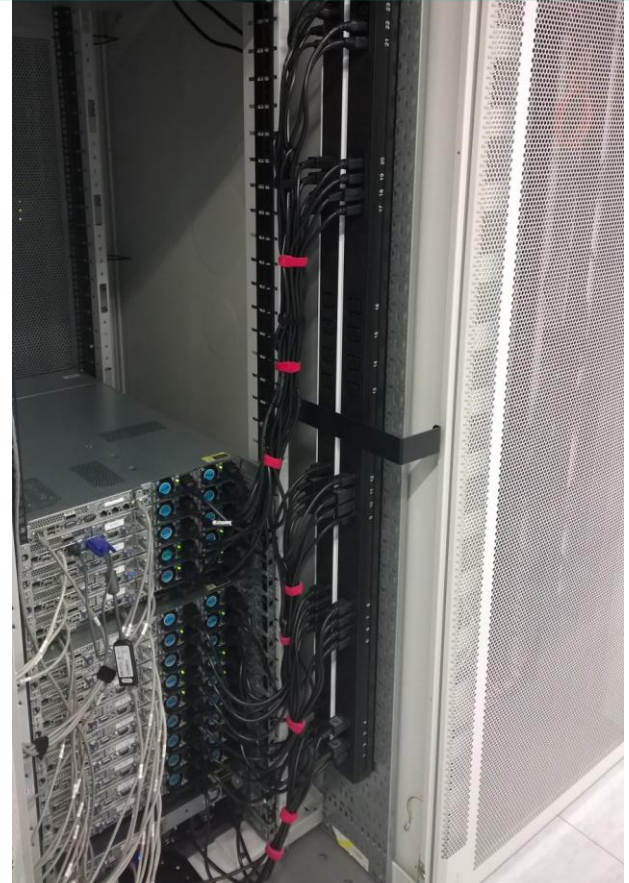
Skápar – Skipulag




Skápar – Skipastigi



Skápar – Frágangur



Skápar – Bókhald

Location	Row	Racks
Archive	Archive 1	 Archive 1
Verne Global » Datahall 1	DH1 Row 11	 h1-11A h1-11C h1-11D h1-11E h1-11F h1-11G h1-11H h1-11I h1-11J h1-11K
Verne Global » Datahall 1	DH1 Row 12	 h1-12K h1-12M h1-12Q
Verne Global » Datahall 2	DH2 Row 10	 h2-10A h2-10B
Verne Global » Datahall 2	DH2 Row 11	 h2-11A h2-11D h2-11E h2-11F h2-11G h2-11H h2-11I h2-11J
Verne Global » Datahall 2	DH2 Row 12	 h2-12Q h2-12D h2-12J
Verne Global » Datahall 2	DH2 Row 7	 h2-07C
Verne Global » Datahall C	DHC Row 1	 h2-07C h2-07D h2-07E h2-07F h2-07G h2-07H h2-07I h2-07J h2-07K h2-07L h2-07M h2-07N h2-07O h2-07P h2-07Q h2-07R h2-07S h2-07T h2-07U h2-07V h2-07W h2-07X h2-07Y h2-07Z

35		
34		
33		
32		
31		
30		
29		
28		
27		ds-1011
26		ds-1010
25		ds-1009
24		
23		ds-1007
22		ds-1006
21		ds-1005
20		
19		
18		ds-1002
17		
16		ds-1000
15		ds-0999
14		ds-0998
13		ds-0997
12		ds-0996
11		
10		
9		ds-0993
8		ds-0992
7		ds-0991
6		ds-0990
5		ds-0989
4		ds-0988
3		
2		ds-0985
1		ds-0986

Búnaður - Bókhalð

summary

Common name: ds-099

Object type: [Server](#)

Visible label: ds-099

Asset tag: ds-099

CPUs: 2 x E5-2403

Drives: 2 x 2TB SATA

FQDN:

HW type: HP ProLiant DL360e G8

iLO password:

ISO mikilvægistig: E - Very low - May be down 2 or more businessdays

Last firmware update: 17.10.2014

Memory: 16GB (2x4GB)

OEM S/N 1: CZJ23413

Explicit tags: Network Operation

Implicit tags: OK Hýsing

ports and links

Local name	Visible label	Interface	L2 address	Remote object and port	Cable ID
ilo		1000Base-T		ver-ac-h1-1 Gi1/46	okpl-1034c
kvm		KVM (host)			
lan1		1000Base-T		ver-ac-h1-1 Gi1/10	okpl-1030c
lan2		1000Base-T			

rackspace allocation

DH1 Row 11:  h1-11G 

	Front	Interior	Back
42		P-1003s	
41		[CableOrganizer]	
40		P-1031d	
39		ver-ac-h1-11ga	
38		[CableOrganizer]	
37			
36			
35			
34			
33			
32			
31			
30			
29			
28			
27		ds-1011	
26		ds-1010	
25		ds-1009	
24			
23		ds-1007	
22		ds-1006	
21		ds-1005	
20			
19			

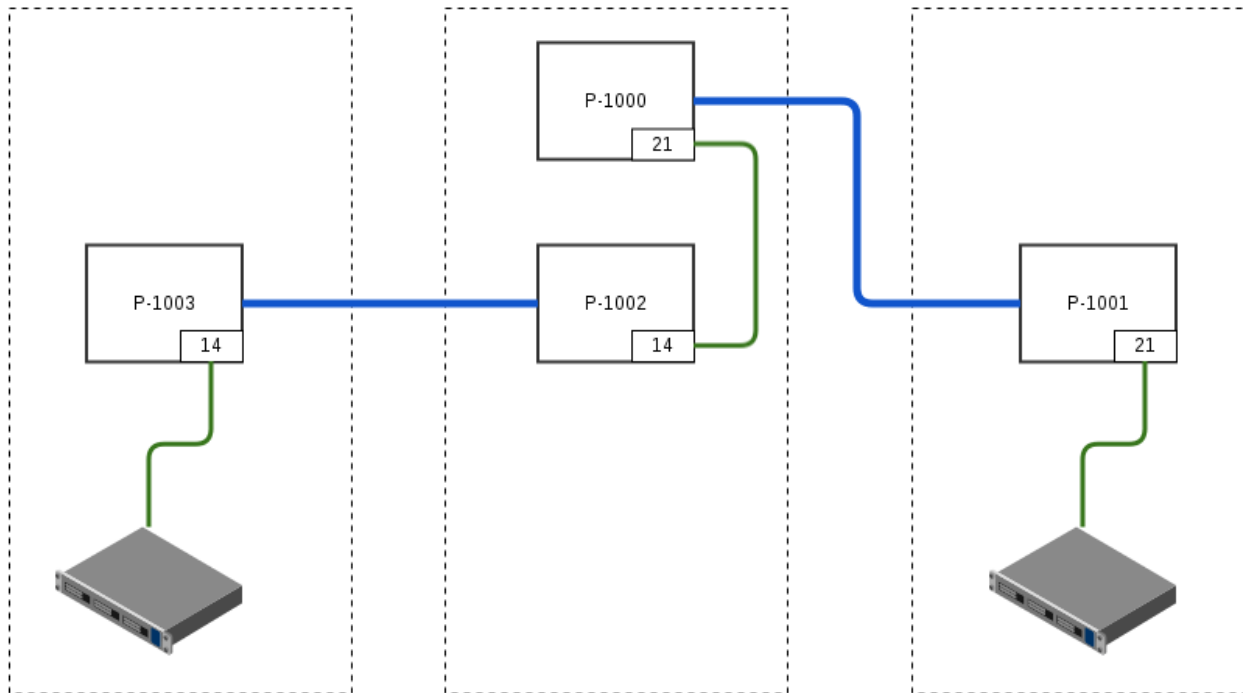


Línur

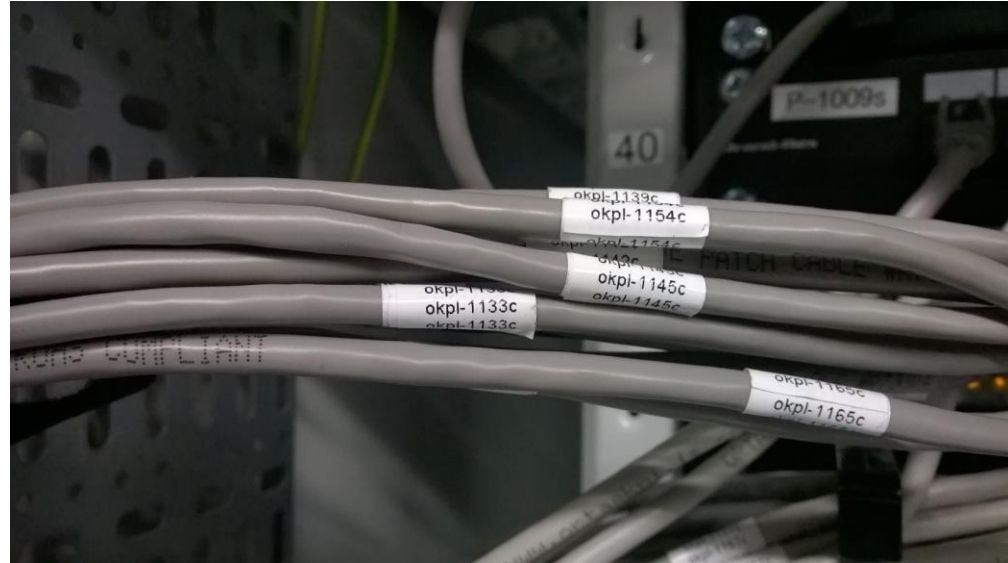
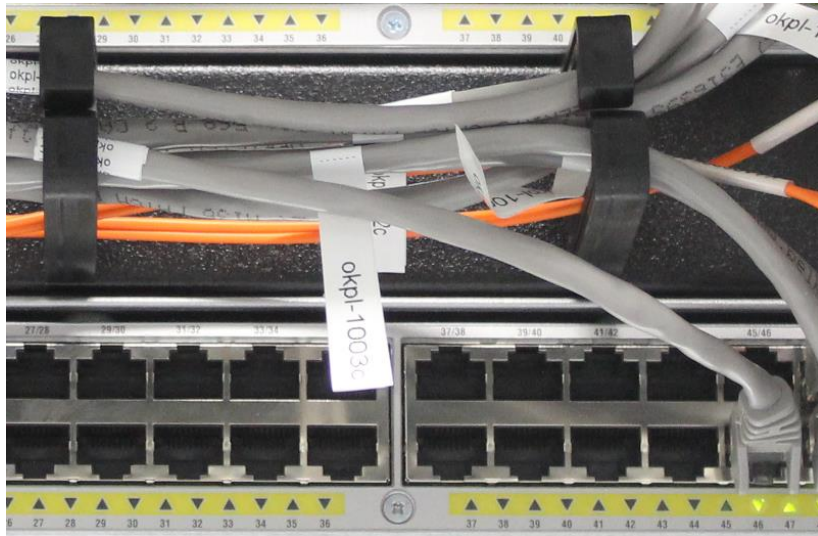
Línur - Bókhald

okpl-1459c	ver-odf-h2-12q-39b	2 A	LC-SM-Fiber	ver-odf-h2-12q-37b	7	LC-SM-Fiber
okpl-1459c	vodafone-12d-panel-1	port 7	LC-SM-Fiber	vodafone-r080	gi0/33	1000Base-BX10-D
okpl-1458c	ver-ac-h2-11i-a	Gi1/47	1000Base-T	dade2-1003	lan2	1000Base-T
okpl-1457c	ver-ac-h2-11i-a	Gi1/45	1000Base-T	oruggafr-1004	lan1	1000Base-T
okpl-1456c	ver-ac-h2-11i-a	Gi1/44	1000Base-T	oruggafr-1004	ilo	1000Base-T
okpl-1455c	P-1019s	3	LC-MM-Fiber	infra-blchassis-01.okhysing.is	VC2 X3	10GBase-SR
okpl-1455c	ver-pe-01-h1	Te1/7/6	10GBase-SR	P-1018s	3	LC-MM-Fiber
okpl-1454c	P-1019s	1	LC-MM-Fiber	infra-blchassis-01.okhysing.is	VC1 X3	10GBase-SR
okpl-1454c	ver-pe-01-h1	Te1/7/5	10GBase-SR	P-1018s	1	LC-MM-Fiber
okpl-1453c	P-1007s	4	1000Base-T	dade2-1004	lan3	1000Base-T
okpl-1453c	P-1004s	11	1000Base-T	P-1004s	8	1000Base-T
okpl-1453c	ds-1012	lan3	1000Base-T	P-1009s	3	1000Base-T
okpl-1452c	ver-ac-h2-11i-a	Gi1/46	1000Base-T	innranet-1002	lan1	1000Base-T
okpl-1451c	ver-ac-h1-11f.a	Gi1/2	1000Base-T	askja-1004	lan2	1000Base-T
okpl-1450c	ver-ac-h1-11f.a	Gi1/3	1000Base-T	askja-1004	lan1	1000Base-T
okpl-1449c	ver-ac-h1-11f.a	Gi1/4	1000Base-T	askja-1004	ilo	1000Base-T
okpl-1448c	ver-ac-h1-11f.a	Gi1/24	1000Base-T	dade2-1004	lan1	1000Base-T
okpl-1447c	ver-ac-h1-11f.a	Gi1/23	1000Base-T	dade2-1004	ilo	1000Base-T
okpl-1446c	P-0010	Port 2	LC-MM-Fiber	hb9-pe-01	gi0/20	1000Base-SX
okpl-1446c	panel-6h-south-fiber-1	B 3.2	LC-MM-Fiber	hb9-ce-6h-south	Gi0/1	1000Base-SX
okpl-1446c	panel-5h-south-fiber-1	A 3.4	LC-MM-Fiber	panel-5h-south-fiber-1	B 1.2	LC-MM-Fiber
okpl-1446c	panel-5h-north-fiber-1	Port 2	LC-MM-Fiber	panel-5h-north-fiber-2	A 3.4	LC-MM-Fiber
okpl-1445c	ver-pe-01-h2	Gi2/3/45	1000Base-T	verne-dist-h2	Gi1/0/22	1000Base-T
okpl-1444c	ver-ac-h1-11f.a	Gi1/5	1000Base-T	askja-1002	lan4	1000Base-T
okpl-1443c	ver-ac-h1-11f.a	Gi1/6	1000Base-T	askja-1002	lan3	1000Base-T
okpl-1442c	ver-ac-h2-11i-a	Gi1/43	1000Base-T	ccentral-1001 - frátelið	right-lan2	1000Base-T
okpl-1441c	ver-ac-h2-11i-a	Gi1/42	1000Base-T	ccentral-1001 - frátelið	right-lan1	1000Base-T
okpl-1440c	ver-ac-h2-11i-a	Gi1/41	1000Base-T	ccentral-1001 - frátelið	right-ilo	1000Base-T
okpl-1439c	ver-ac-h2-11i-a	Gi1/40	1000Base-T	ccentral-1001 - frátelið	left-lan2	1000Base-T
okpl-1438c	ver-ac-h2-11i-a	Gi1/39	1000Base-T	ccentral-1001 - frátelið	left-lan1	1000Base-T

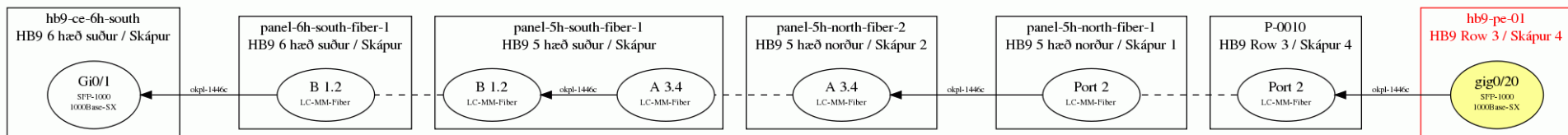
Línur - Auðkenni



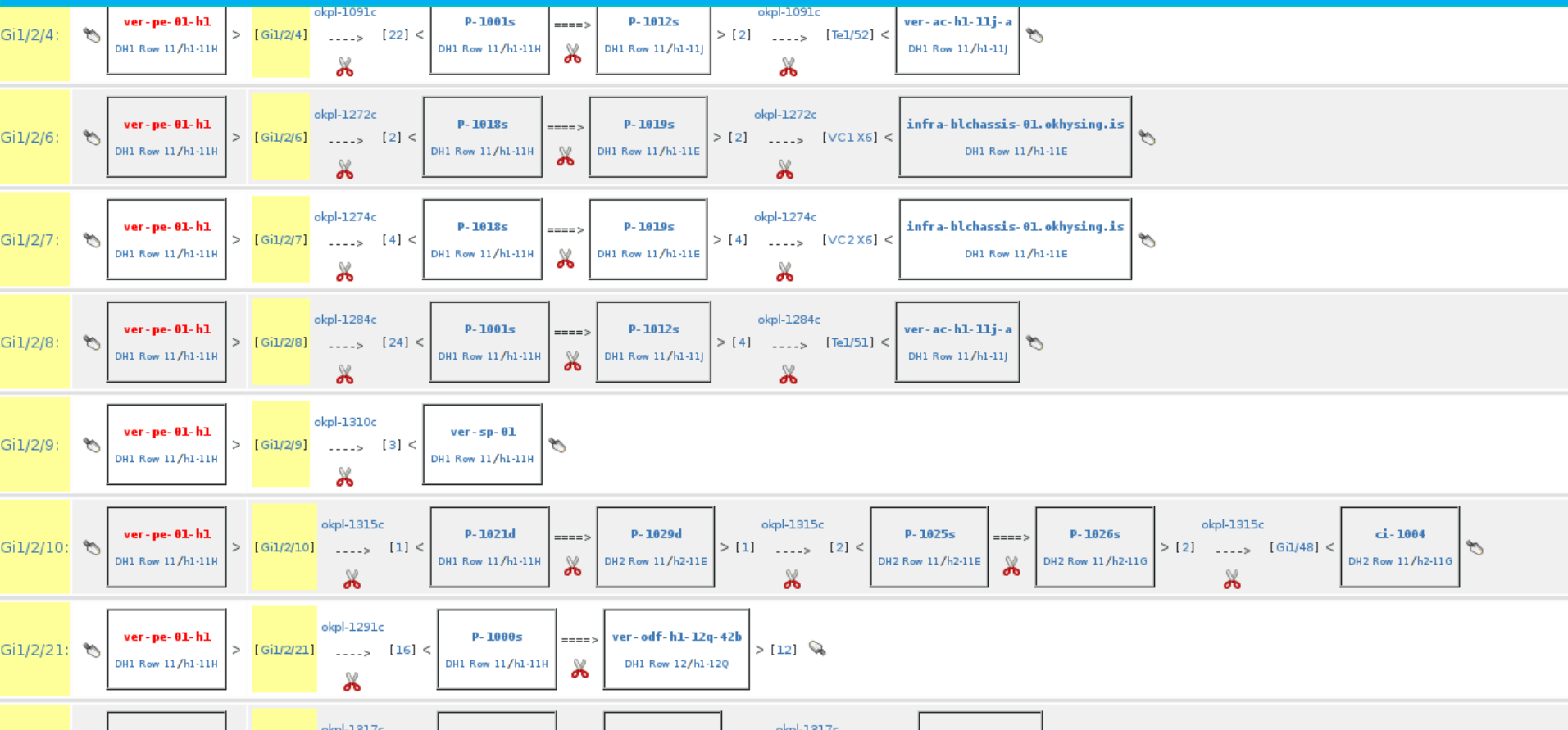
Línur - Merkingar



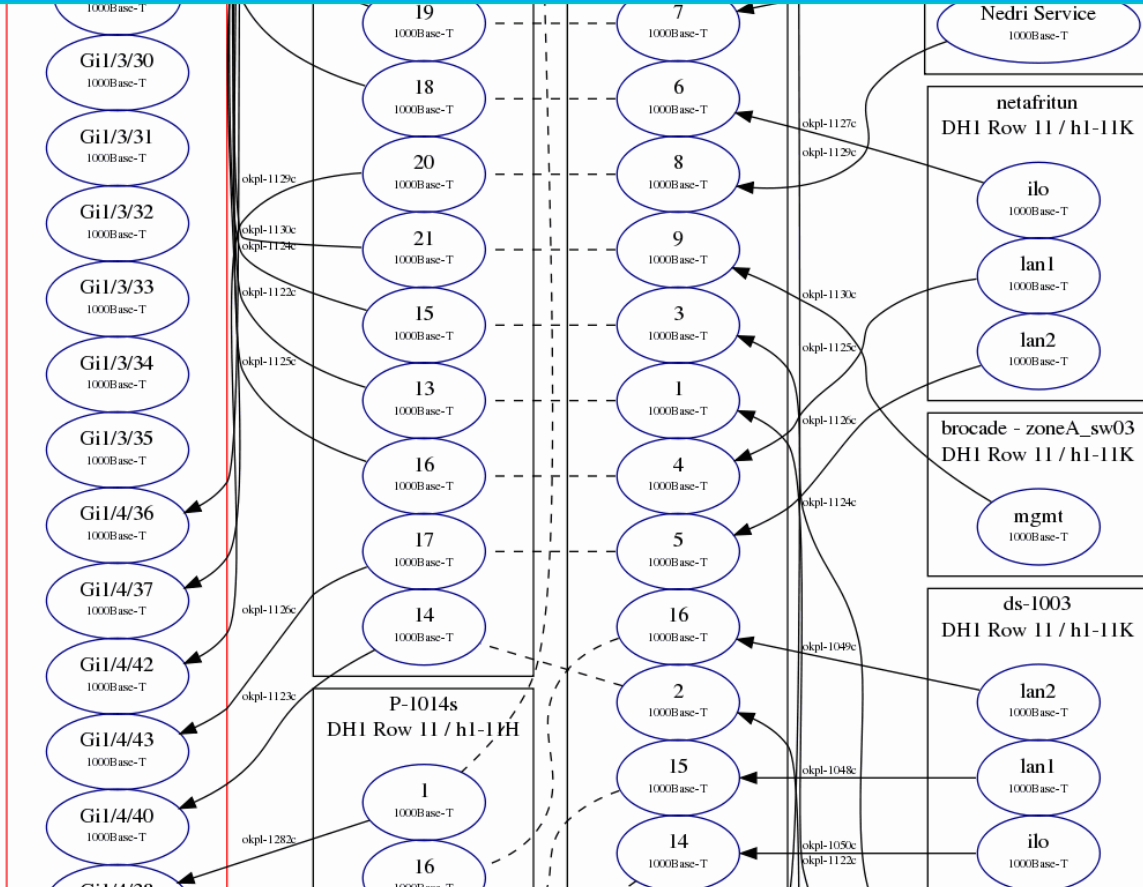
Línur - Kort

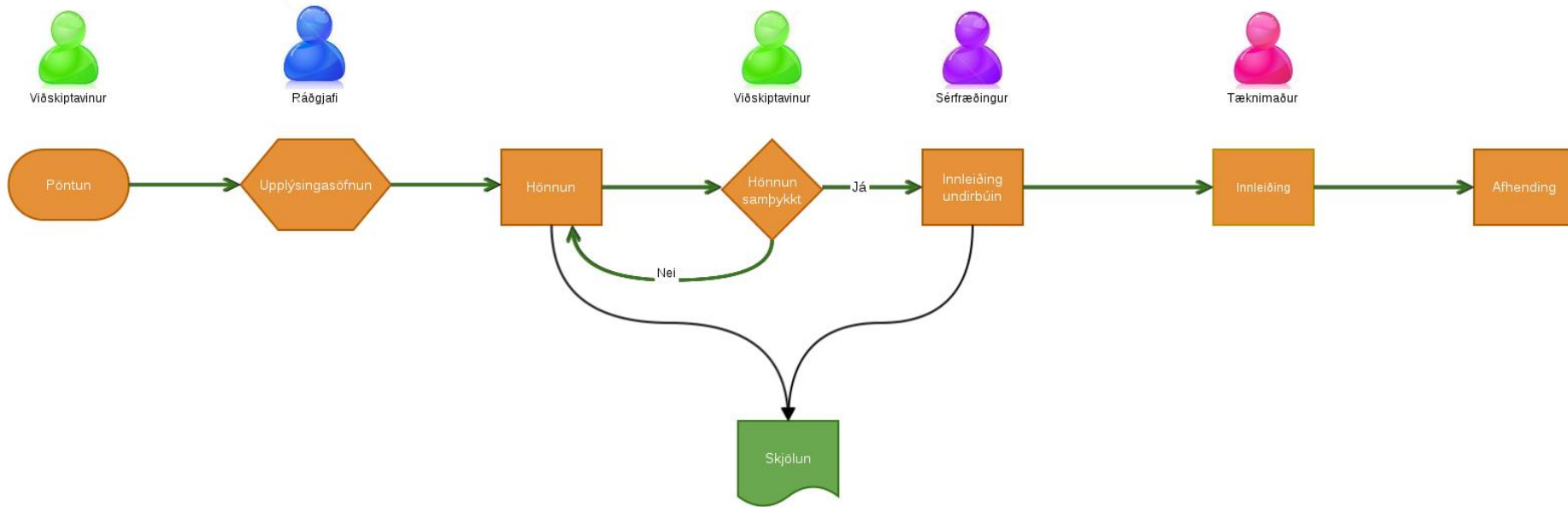


Línur - Kort



Línur - Kort





Verklag

Samantekt

- Skipting ábyrgðar
- Nákvæm skjölun
- Tímasparnaður
- Mistök lágmarkuð

Spurningar